

Download and Install SUMADI App - Mac OS



To download and install the **SUMADI™ App** you can use the following browsers: **Google Chrome, Mozilla Firefox, Safari or Microsoft Edge.**

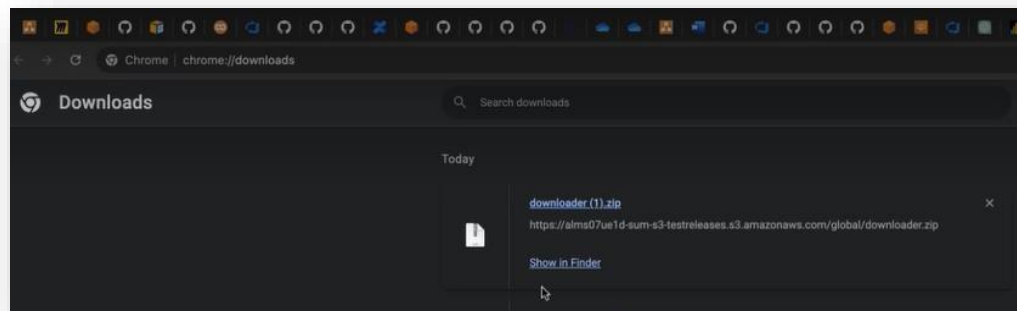
- 1 Through your browser, enter the URL (link) you received from your institution to download **SUMADI™**.

Next, the SUMADI™ download page will appear, where you will need to click on the “**Mac Os**” button to download the SUMADI™ *downloader.zip* on your Mac.

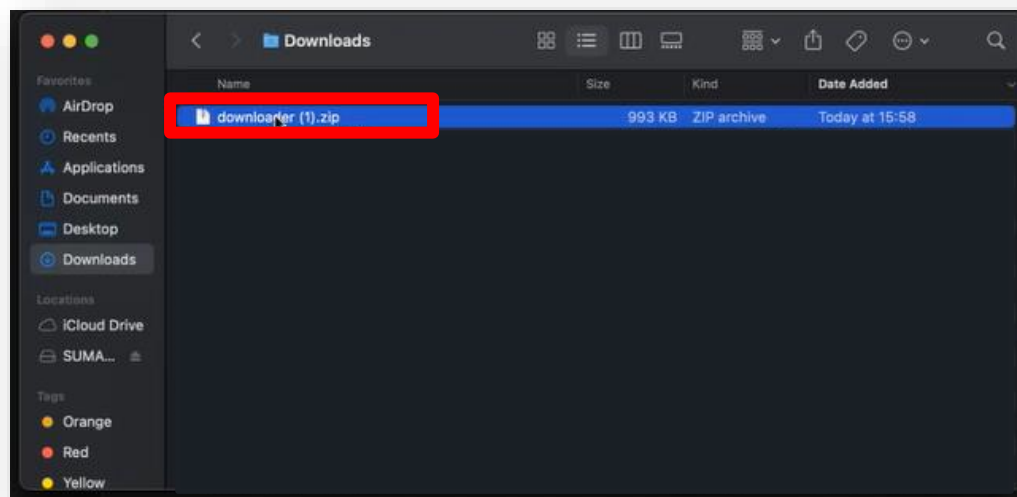


The screenshot shows the SUMADI download page. At the top left is the SUMADI logo. The main heading is "Download SUMADI". Below it, a text instruction reads: "If download doesn't start, click in the button with your OS name:". There are two blue buttons: "Windows" with a Windows logo icon and "Mac Os" with an Apple logo icon. The "Mac Os" button is highlighted with a red rectangular border. Below each button, the text "Supported Versions" is displayed. Under "Windows", it lists "Windows 10, 11". Under "Mac Os", it lists "Mac OS Catalina, Big Sur, Monterey, Ventura". To the right of the buttons is an illustration of a computer monitor displaying a dashboard titled "Your Exams" with various data cards, a keyboard, and a mouse. The background features a large blue arrow pointing right. At the bottom, a dark blue footer contains the copyright notice: "© 2023 SUMADI Global B. V. - All rights reserved."

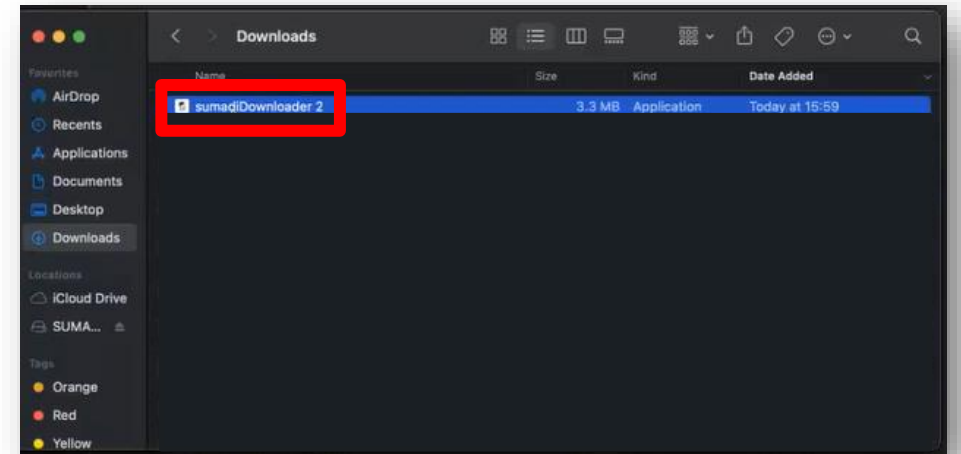
- 2 Then, open the *downloader.zip* file in your **Downloads** folder.



- 3 Once you open your **Downloads** folder, run the *downloader.zip* file by double-clicking on it.



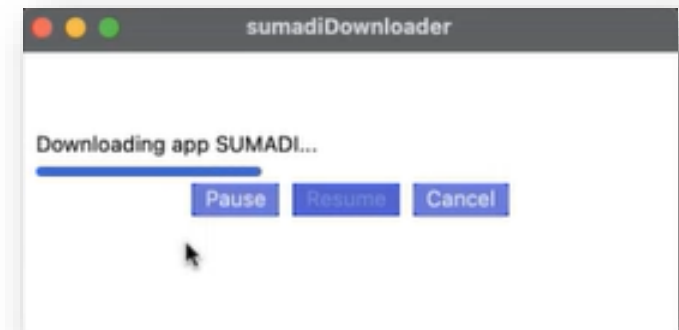
- 4 When the `downloader.zip` is executed, it will be unzipped and the *sumadiDownloader* icon will appear, double click on this icon to execute it.



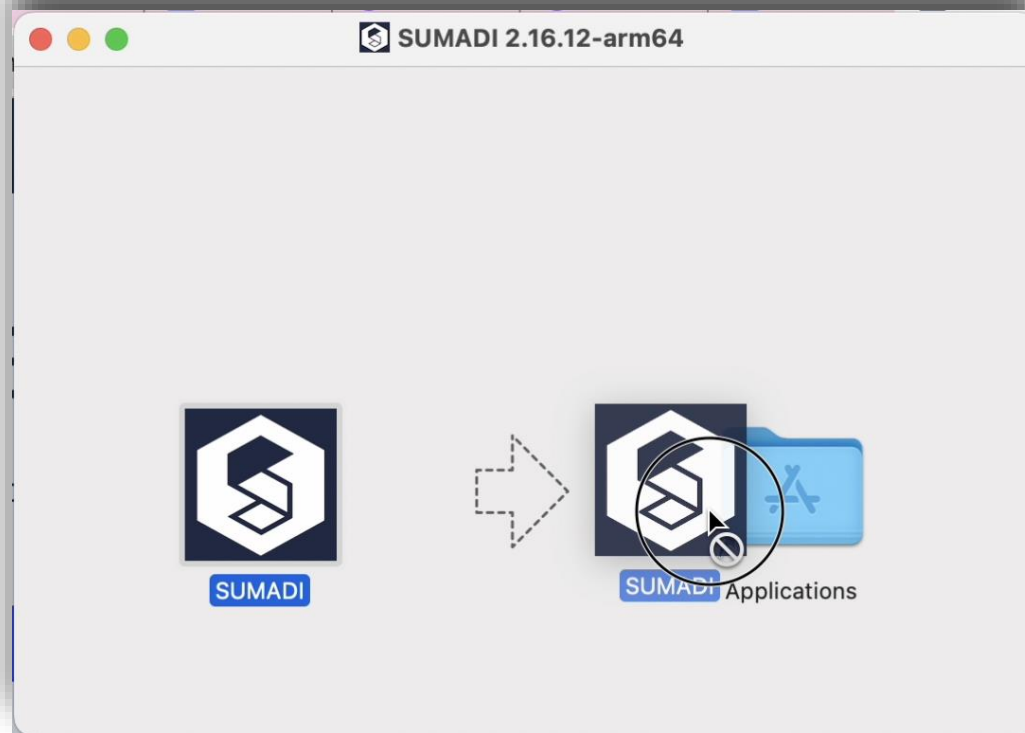
- 5 Then, you must confirm that you want to open the app by clicking on the **“Open”** button.



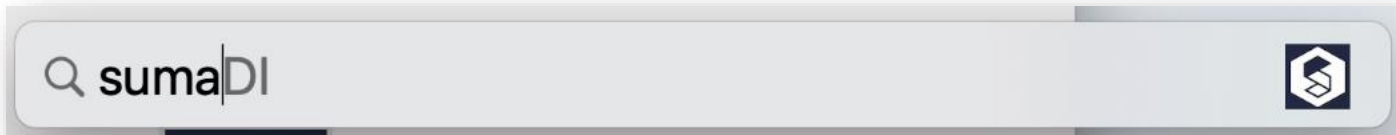
- 6 Next, a window for downloading the tool will appear, click on the ***“Download file”*** button.
- 7 Next, the download of the SUMADI™ app will begin.
- 8 Once the download is complete, you will be notified that the download has finished successfully.



- 9 The following window will open, you must select the **SUMADI™** icon and drag it to the **applications folder** that is observed inside the box.

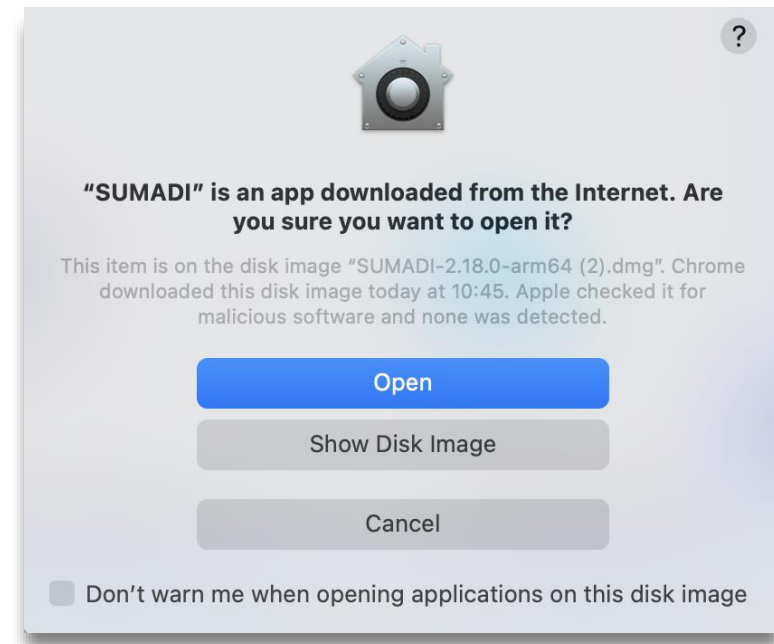


10 We can open the application using the computer's browser or from the applications folder.



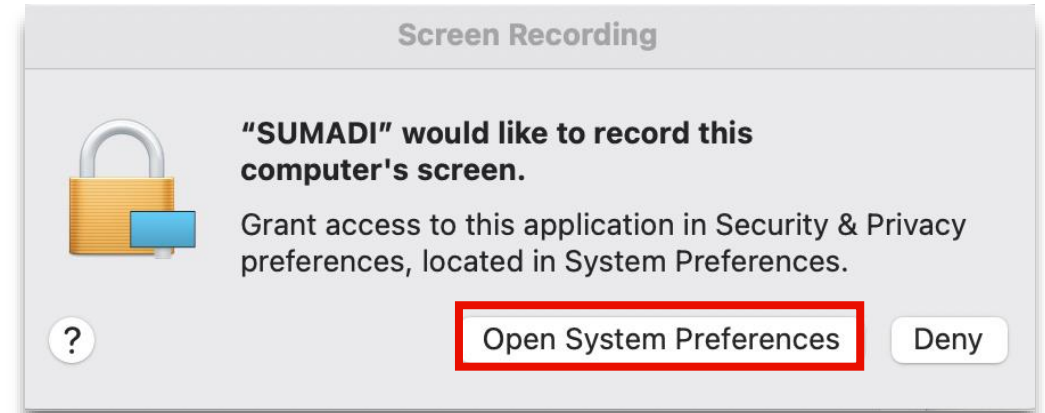
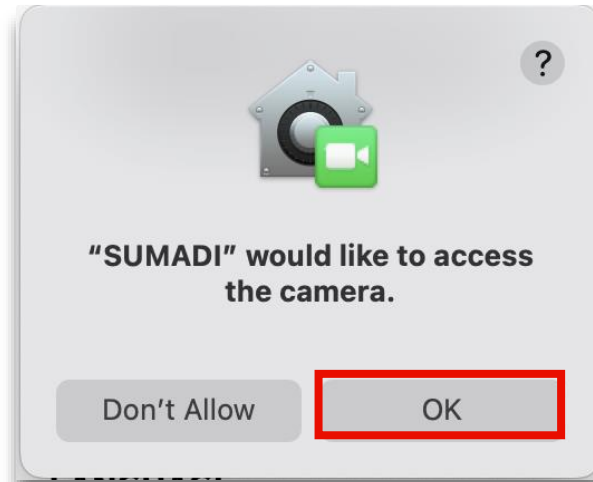
Name	Date Modified	Size	Kind
Preview	11 Aug 2022 at 00:44	10.7 MB	Application
Prime Video	18 Apr 2023 at 15:17	236 MB	Application
QuickTime Player	11 Aug 2022 at 00:44	7.3 MB	Application
Reminders	11 Aug 2022 at 00:44	17.2 MB	Application
Safari	11 Aug 2022 at 00:44	14 MB	Application
Shortcuts	11 Aug 2022 at 00:44	3.7 MB	Application
Siri	11 Aug 2022 at 00:44	2.5 MB	Application
Slack	11 Apr 2023 at 08:24	471 MB	Application
Stickies	11 Aug 2022 at 00:44	1.8 MB	Application
Stocks	11 Aug 2022 at 00:44	4.1 MB	Application
SUMADI	10 Apr 2023 at 11:32	661.5 MB	Application
System Preferences	11 Aug 2022 at 00:44	2.8 MB	Application
TextEdit	11 Aug 2022 at 00:44	2.6 MB	Application
Time Machine	11 Aug 2022 at 00:44	1.2 MB	Application
TV	11 Aug 2022 at 00:44	77.5 MB	Application
Utilities	11 Aug 2022 at 00:44	--	Folder
Voice Memos	11 Aug 2022 at 00:44	5.5 MB	Application
Wondershare Filmora 11	16 Mar 2023 at 17:44	1.4 GB	Application
zoom.us	23 Mar 2023 at 13:55	241.3 MB	Application

- 11 When closing the installer you will also notice that a window is displayed confirming whether you wish to open the **SUMADI™** application.



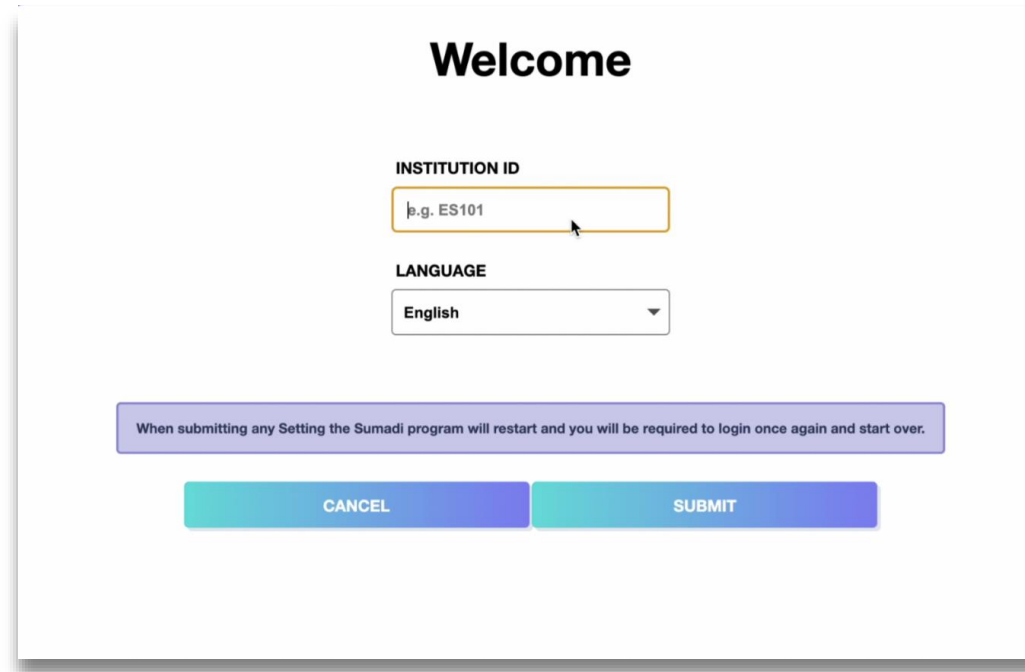
- 12 Click on the **"Open"** button.

- 13 When logging into the application, you must allow the application to **screen record**, provide access to your **microphone** and access to your computer's **camera**.



Note: This process is only necessary when installing SUMADI™ for the first time. In case there is an application update, the new update will be downloaded automatically when you open SUMADI™ and you will see a message indicating that the application is being updated.

Finally, you will see the **SUMADI™** Welcome window with parameters that you must configure to be directed to your institutional platform.



The image shows a 'Welcome' window for the SUMADI program. It features a title 'Welcome' at the top. Below the title, there are two input fields: 'INSTITUTION ID' with a text box containing 'e.g. ES101' and a mouse cursor, and 'LANGUAGE' with a dropdown menu showing 'English'. A purple notification bar below the fields states: 'When submitting any Setting the Sumadi program will restart and you will be required to login once again and start over.' At the bottom, there are two buttons: 'CANCEL' and 'SUBMIT'.

Note: Make sure to close all applications that are not allowed for the evaluation, including those running in the background, as they may cause problems.