

Download and Install SUMADI App - Windows



Installing SUMADI™ (Windows)

To download the **SUMADI™ App** and be able to take your exam, you can use any of the following browsers: **Google Chrome, Mozilla Firefox, Safari, or Microsoft Edge.**

- 1 Using your browser, enter the URL link you received from your institution to download the SUMADI™ App.

- 2 SUMADI™ will automatically detect your operating system and start the download, or you can press the "**Windows**" button to start the download.

SUMADI™

Download SUMADI

If download doesn't start, click in the button with your OS name:

Windows
Supported Versions
Windows 10, 11

Mac Intel Chip
Supported Versions
Mac OS Catalina, Big Sur, Monterey, Ventura

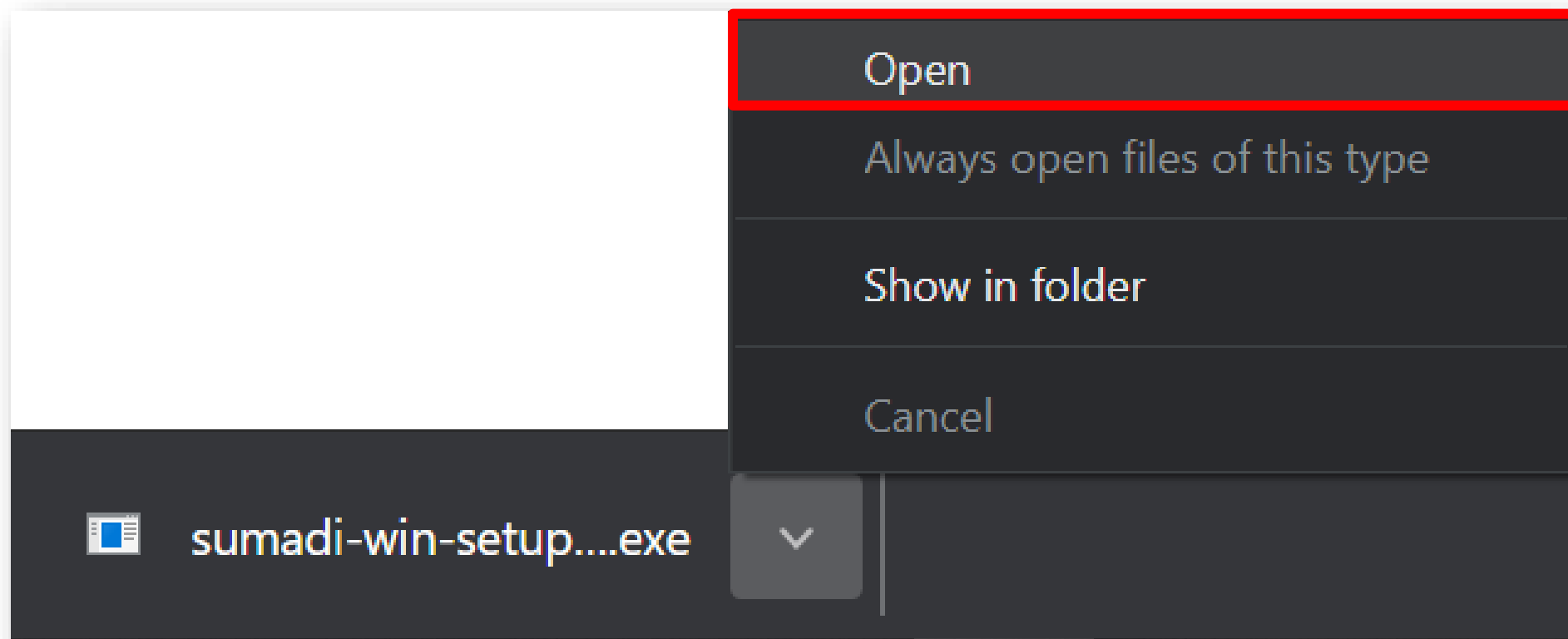
Mac Apple Silicon
Supported Versions
Mac OS Monterey, Ventura

*** Tip for Mac users:**
How to check if your Mac uses Apple Silicon or Intel Chip

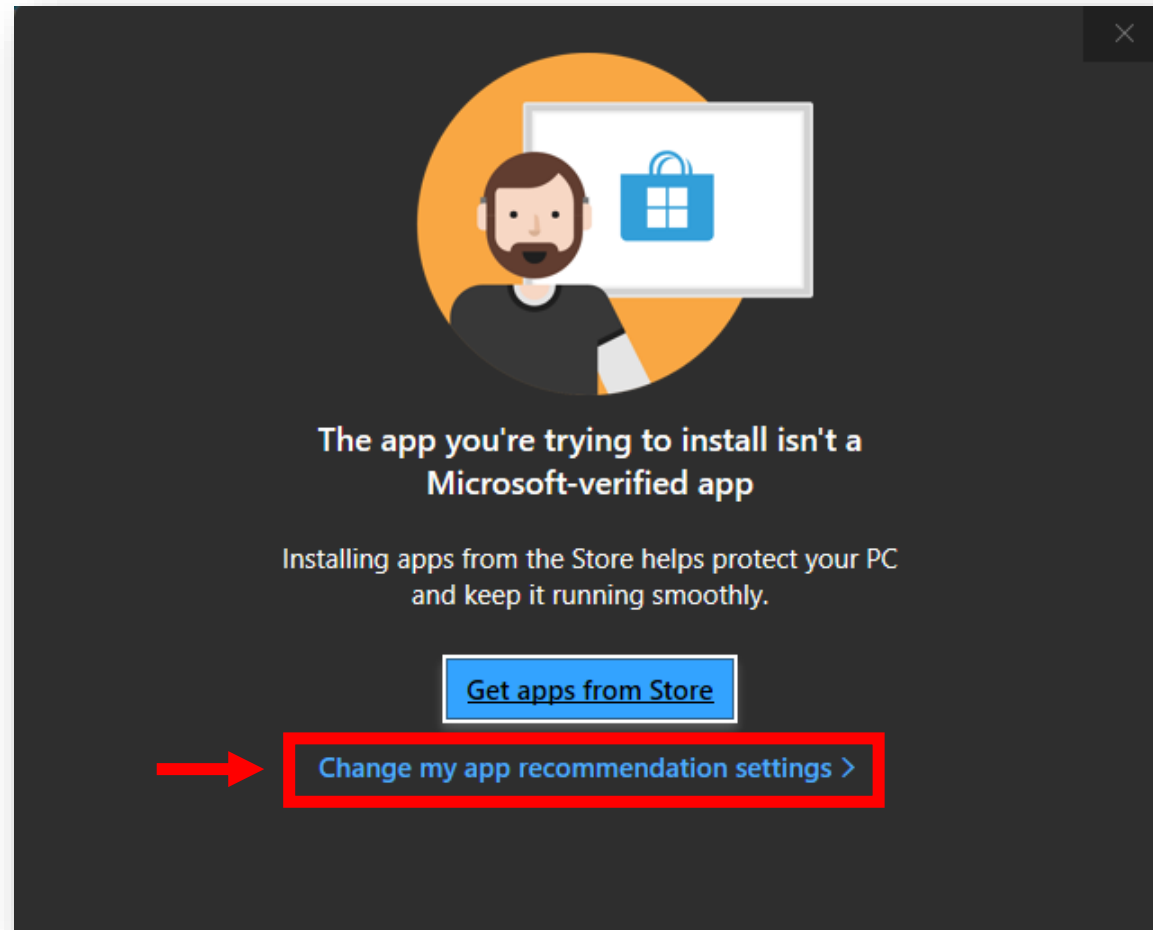
From the Apple menu **🍏** in the corner of your screen, choose **About This Mac**.
Mac computers with **Intel** processors will show an item labeled **Processor**,
while Mac computers with **Apple Silicon** will show an item labeled **Chip**.

© 2022 SUMADI Global B. V. - All rights reserved.

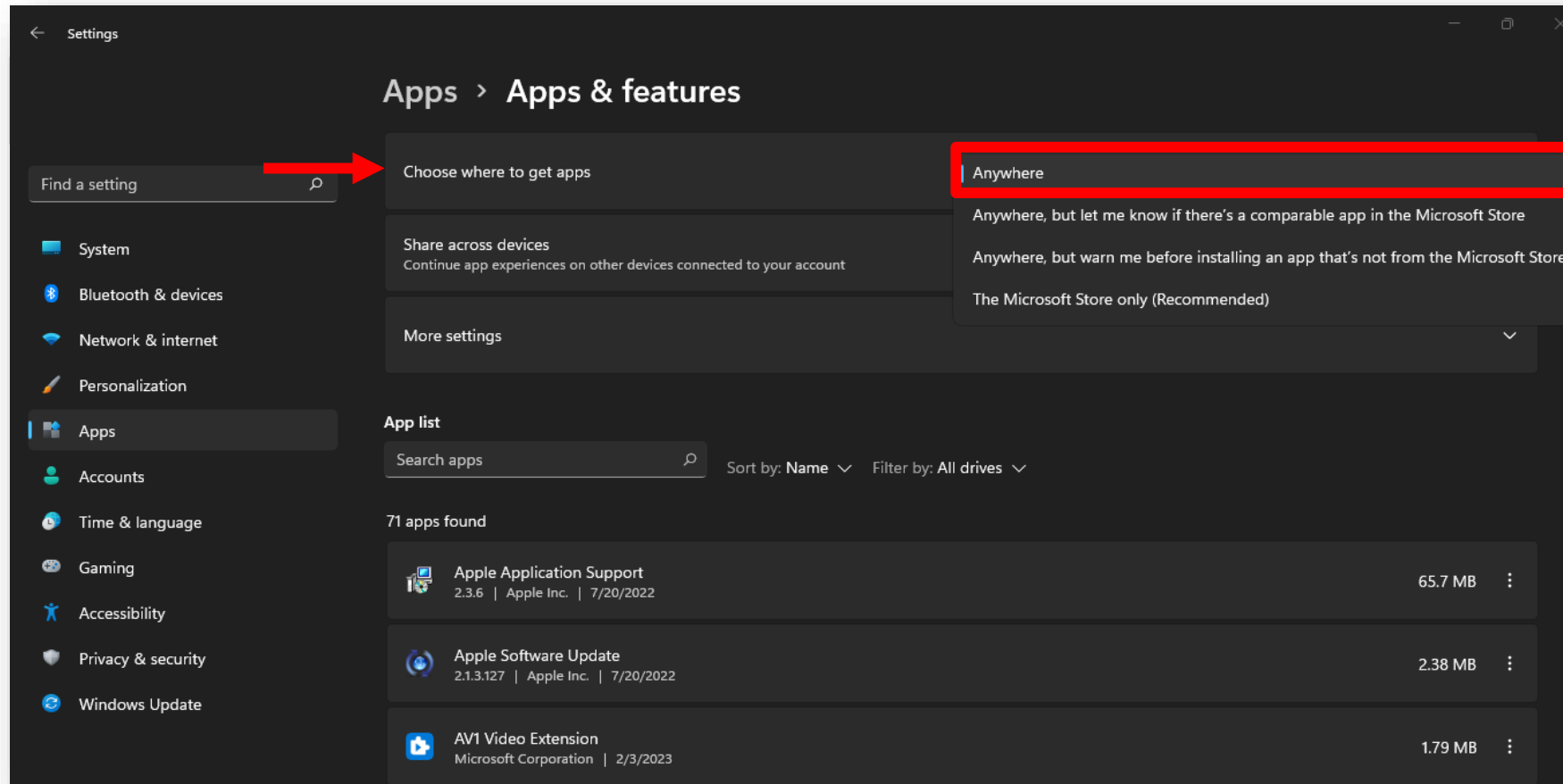
- 3 Once you have finished downloading, click on the more options button of your download in the lower left corner of your screen and choose the *Open* option.



- 4 In case you receive the following message when trying to install SUMADI™ on your computer, please select the ***“Change my app recommendation settings”*** option:

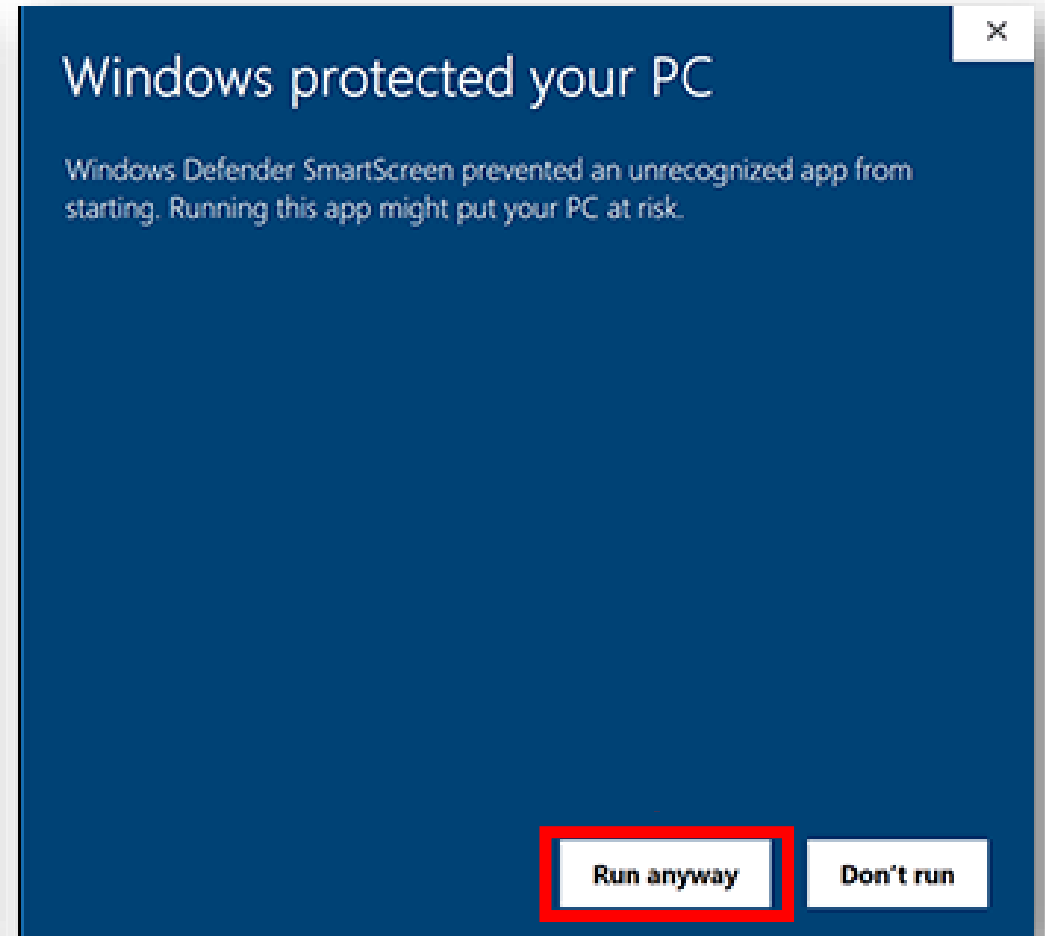
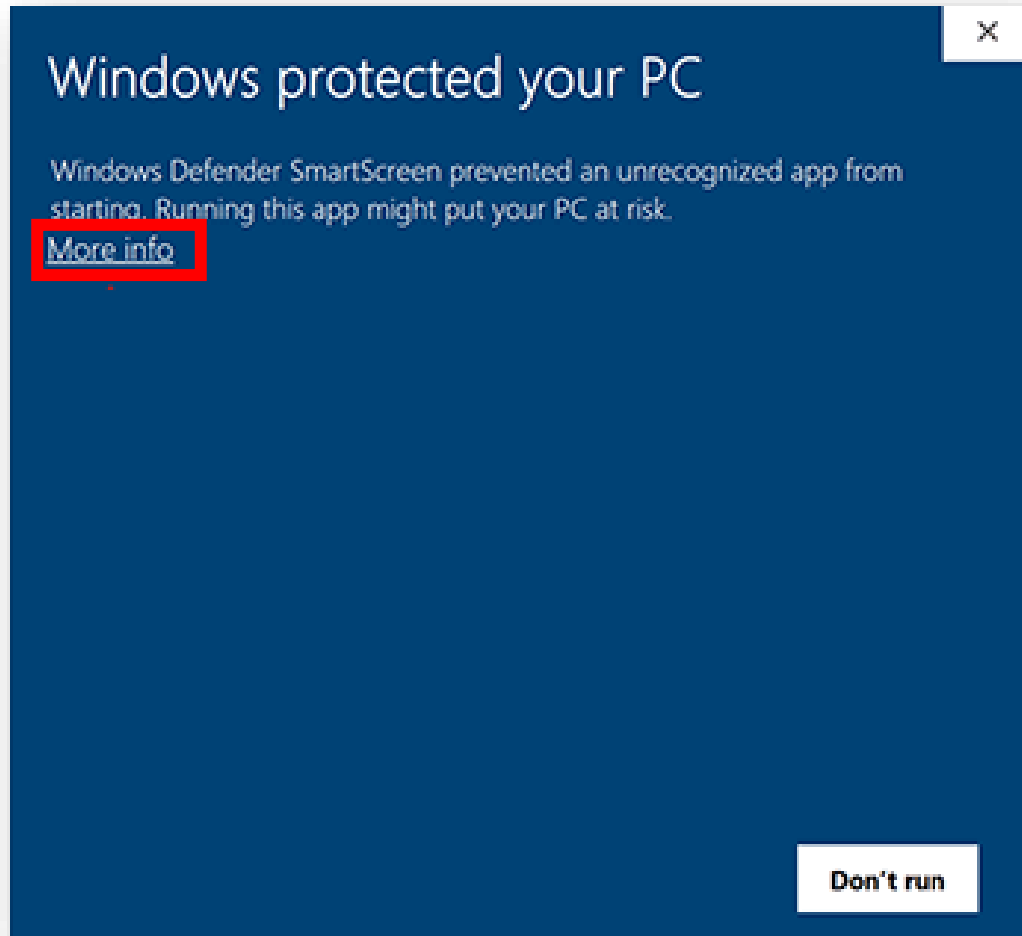


- 5 Then, go to the first section called "**Choose where to get apps**" and click on the "**Anywhere**" option.



- 6 Try opening SUMADI™ again from your *Downloads* folder.

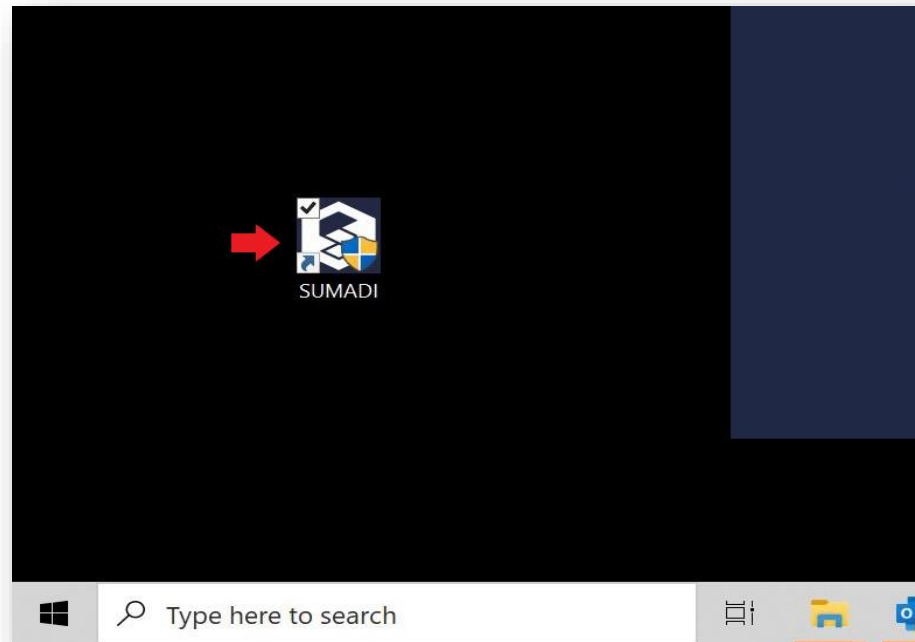
- 7 In case you receive a protection notification from Windows Defender, select the option "**More information**" and then "**Run anyway**".



- 8 Your computer may ask you to authorize "SUMADI™" to make changes to your computer; you must click on the **"Sí / Yes"** option.



- 9 The app is ready to be installed.
- 10 Once the App is installed, locate the download file and click on it or go to your "**Applications**" folder and click on SUMADI™, this will create a shortcut icon on your desktop.



Note: Make sure to close all background apps.

11 In case you have not given administrator permissions to SUMADI™, go to the search bar and type the name of the app and click on the ***"Run as administrator"*** option.

